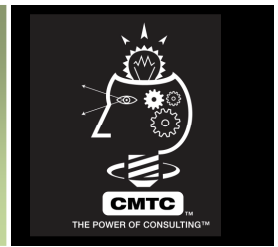


DEFENSE PARTS DIRECT™



Integrated Solutions to Parts Obsolescence

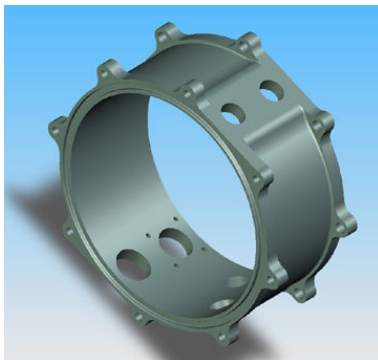
Defense Parts Direct™, a service of CMTC, provides solutions for difficult to obtain parts required for legacy defense systems.

Our integrated approach to parts obsolescence enables us to tackle all the elements required to develop a solution – from the initial need identification through parts delivery. A Defense Parts Direct solution incorporates four essential elements:

- Comprehensive Engineering
- Thorough Qualification
- Agile Manufacturing
- Assured Delivery

Reverse engineering, technical data package development, first article build, testing, qualification, and manufacturing via our manufacturing network are incorporated in a project management framework to meet customer requirements.

Our team of project engineers responds to each parts obsolescence and sustainment need by providing the right mix of engineering and manufacturing capabilities.



“You made my job easier”

Engineer – Oklahoma City A.L.C.

Proven Capability for Fast Response

Defense Parts Direct provides engineered and fully qualified first article parts within several weeks to a few months from the *time of request*.

A proven parts provider for military aviation, land, and maritime systems, Defense Parts Direct has successfully reverse engineered, qualified first articles, and delivered certified parts for customers including:

- Air Force – KC-135
- Air Force – B-52
- Marine Corps – Light Armored Vehicle (LAV)
- Navy – Sea Sparrow Missile Systems
- Navy – Surface Targets

Parts delivered include: avionics assemblies, electrical wiring harnesses, structural components, and mechanical items.

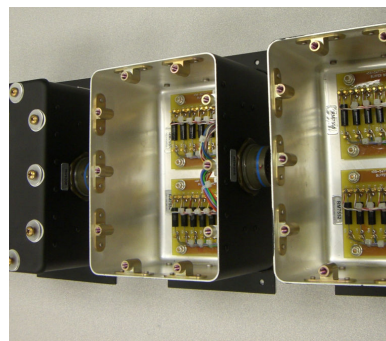


Photo: U.S. Air Force

Multiple Manufacturing Sources Ensure Long-Term Viability

A Defense Parts Direct solution brings *multiple* manufacturing sources to bear on the Diminished Manufacturing Source (DMS) problem ... a solution that works to address DMS issues over the long-term.

Typical approaches to DMS parts issues utilize an alternate single-point manufacturing source, an approach that often results in only a short-term fix. A part qualified by CMTC's Defense Parts Direct team is one that you can consistently count on to be available over the long-term because several manufacturers are available in our network ... our vast California manufacturing supply chain makes this possible.

About CMTC

A private, non-profit corporation, CMTC was established in 1992 and is affiliated with the National Institute of Standards and Technology's (NIST) Hollings Manufacturing Extension Partnership (MEP).

CMTC's Defense Parts Direct service fully leverages the aerospace and defense manufacturing supplier base in California. With over 5,000 manufacturers, it is the nation's largest and most diversified defense manufacturing resource.

CMTC
690 Knox Street, Suite 200
Torrance, CA 90502
310-263-3060
www.cmtc.com

CAGE Code: 3GFX7